



THE CONTRACTORS BOOKLET

...making life simple!

Scolmore[®]
GROUP

www.scolmore.com



IP65 Inceptor®
Nano⁵ Fixed

IP54 Inceptor®
Nano⁵ Adjustable



IP65
FIXED

60MM
CUT OUT

IP54
ADJUSTABLE

75MM
CUT OUT



Pre-wired Flow™ connector

Flow™ is Click® Scolmore's pre-wired connection system designed to speed up installation and allows even faster removal for testing and replacement of components.



Shallow recess depth with a powerful SMD light source, paired with a 40° multi-faceted, halogen-effect lens for exceptional light quality.

Newly designed, dependable and independently verified fire-rated structures, combined with trademark intumescent band ensures maximum safety in the event of a fire.

There is the choice of 3 different finishes; chrome, satin chrome and white, as well as fixed and adjustable options.

LED

2
YEAR
WARRANTY

2700K
WARM WHITE

4000K
COOL WHITE

Poised and Ready

TAKE THE STING OUT OF LENGTHY INSTALLATIONS, WITH THE PRE-WIRED FLOW™ CONNECTOR

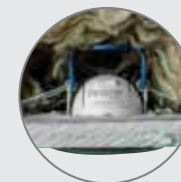
The Inceptor® Nano⁵ range comprises two compact, fire-rated, dimmable downlights, which pack an array of features into their shallow profile. The Nano⁵ consumes less power and produces a comparable light output while reducing the size and cost.

With a highly competitive price point for the features and benefits offered, the new high-performance, 4.8W LED lighting products are designed to have mass market appeal and are suitable for a variety of uses in domestic applications.

Fire rating 30, 60 and 90 minute. Acoustic: OdB (zero impact on sound insulation)
Airflow: BS 5250: 2002 compliant.

Insulation support bracket

Compatible with Inceptor® Nano⁵ downlights
ISC1020 sold separately





IP65 Inceptor®
Omni Fixed

IP54 Inceptor®
Omni Adjustable

Interchangeable
fixed and adjustable
bezels

Adjustable bezel sold separately



Switchable colour temperature

The Omni features a built-in three position switch which grants the ability to change the colour temperature instantly.

The Inceptor® Omni combines cutting-edge chip-on-board LED technology and a custom built multi-faceted lens to deliver a quality of light comparable to traditional light sources such as halogen lamps.

Insulation support bracket

The removable insulation support clip fixes directly onto the Omni. This means insulation is lifted away from the unit, maintaining a minimum air space and helping any generated heat to dissipate. Lowering the temperature around the fitting can extend the life of the unit.

Omni Tricolour

**3 SWITCHABLE COLOURS ALL IN ONE FITTING;
WARM WHITE, COOL WHITE AND DAYLIGHT**

Existing technology found in the current Inceptor® products and innovative new features have been combined within one fitting, providing cutting-edge features at a competitive price. Key features include an adjustable colour temperature switch, allowing the selection of colour temperatures to suit the installation. Flexibility and ease of installation are the key factors in the design of this product. The fitting also has the option to change bezels from a fixed version to adjustable option if required.

**5 YEAR
WARRANTY**

Only valid once registered online
at www.scolmore.com

Features:

- Flow™ connector for quick, easy connection
- Compact size, fits into a 65mm+ void depth
- Intumescent collar offers a 30, 60 and 90 minute fire-rating
- Fire, air-flow and acoustic rated
- Double insulation so no earthing is required
- Available in 3 finishes; chrome, satin chrome and white



Available in
our 3 most popular
finishes...

chrome, satin chrome and white



SMD LED technology

Surface mounted LED have high reliability performance and utilise very little power, resulting in low energy consumption which offers a cost saving solution against that of traditional lamps.

Energy efficient

The Inceptor® Pico has an energy saving rating of A+ and an L70 LED lifetime of 20,000 hours resulting in zero maintenance and low energy consumption for the lifetime of the product.

Small Fitting, Big Features

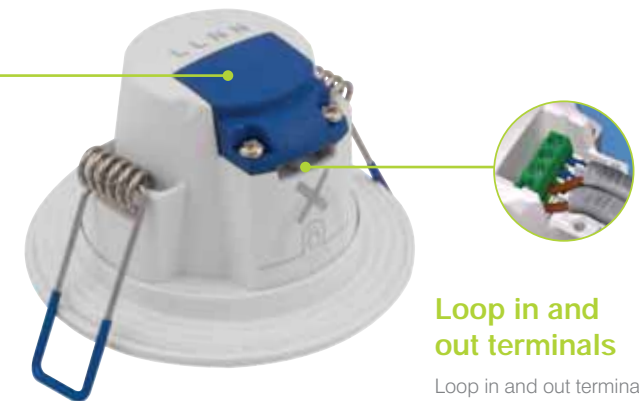
IT'S GOT A LOT TO SMILE ABOUT

The Inceptor® Pico offers a cost effective LED solution whilst producing an excellent light output for the power utilised. The fitting combines a number of key features which sets it apart from competitor products. The Inceptor® Pico is ideal for installations where the void depth is limited, and is an ideal solution for non fire-rated applications.

As well as being suitable for variable ceiling board thickness whether plasterboard or wooden panelling, the Pico has an adaptable cut-out and will fit apertures of 65mm to 75mm diameter.

Screw down cable-grip

A terminal cover with built-in cable-grip both saves time and ensures that no strain is placed on the terminal connections.



Loop in and out terminals

Loop in and out terminals allow easier connection of multiple fittings (daisy-chain). The fitting is double insulated so no earth is required.



Fast-fit integrated Flow™ connector

Saves time during install



Evolution of Lighting

REVOLUTIONARY DESIGN MAKING FOR EASIER INSTALLATION

The Inceptor® Evo was born with the contractor in mind, installation of the bulkhead is made faster with the addition of the Flow™ connector. Simple removal of the surface mount adaptor ring allows the product to be semi-recess mounted with ease.

Available in two designs; circular and eyelid. Both utilise opal optical-grade polycarbonate diffusers and a reinforced, impact-resistant polycarbonate body. The product is double insulated and an earth-loop terminal is provided for convenience.

As well as providing 2 styles of fascias, the Evo is also available with 4 distinct modes of operation:

- 3 hour emergency and microwave sensor
- 3 hour emergency
- Microwave sensor
- Standard driver



Metal enclosure fittings

The robust polycarbonate construction (IK08) can be enhanced further by encasing the body in an additional metal enclosure, providing excellent vandal resistant protection (IK10).

The Inceptor® Evo can be used in a wide range of places and environments. The choice of three different metal fascias grants the opportunity to create a perfect look.

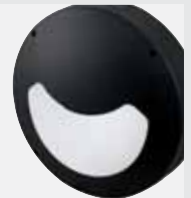
Circular

A Circular fascia allows light to be distributed at an optimum beam angle of 120°.



Eyelid

The Eyelid fascia reduces upward glare, providing greater direction and emphasis of illumination.



Grille

For architectural and design settings the Grille is a perfect fascia which also reduces glare.



Die-cast aluminium body

A die-cast aluminium body ensures a high grade surface finish.

Four side entry points

The metal enclosures offer the same cable entry locations as the Evo's polycarbonate main body; with the four side entries sealed with removable inserts.



OA411AG
OA401AG



OA412AG
OA402AG

New and improved design...

the lid is now designed to stay open to aid installation.



OA035AG
OA501AG



OA036AG
OA502AG

Whatever the Weather

IP66 WEATHERPROOF SOCKETS AND SWITCHES

The IP66 rated weatherproof socket and switch enclosures offer users a single fix installation - with the whole of the back box fixing to the wall to accommodate the socket or modules. Multiple knock-outs on each side (20mm) allow for entry from all angles, and more...

Product code	Description
OA411AG	1 Gang 2-way weatherproof switch Fitted with a 2-way MiniGrid® module
OA412AG	2 Gang 2-way weatherproof switch Fitted with 2 x 2-way MiniGrid® modules
OA035AG	1 Gang weatherproof socket Fitted with a 1 Gang Mode® switched socket
OA036AG	2 Gang weatherproof socket Fitted with a 2 Gang Mode® switched socket
OA401AG	1 Gang weatherproof switch enclosure Modules supplied separately
OA402AG	2 Gang weatherproof switch enclosure Modules supplied separately
OA501AG	1 Gang weatherproof unfurnished enclosure
OA502AG	2 Gang weatherproof unfurnished enclosure

Robust construction

- Polycarbonate construction
- Flexible rubber base allows for mounting on most types of uneven surfaces
- UV protected against fading
- Smooth operation of switches
- Neutral modern design suitable for most locations
- High impact resistance
- Ergonomic design

Multiple gland entry position

- Multiple knockouts (20mm) for entry from all angles

Weatherproof - IP66

- Offers high level of protection against ingress of water jets and dust

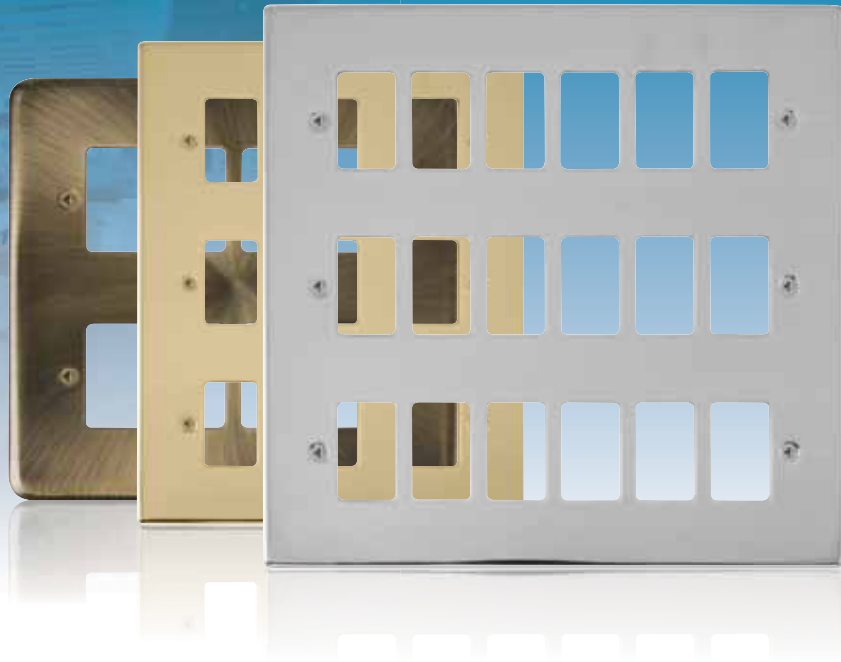
Multiple switch configurations

- Designed to fit any MiniGrid® modules (13A max)



MINIGRID®

The Aquip66® range uses the MiniGrid® system's interchangeable switch modules (13A max), allowing multiple switch configurations.



One module fits all

... via a clipping feature and screw attachment on each module



GridPro® puts you in Pole Position

A VERSATILE RANGE OF 20A GRID PRODUCTS

A comprehensive range of finishes and modules available to offer ultimate flexibility. As well as a wide range of modules to choose from all of our switch modules are 20A rated so they are ideal for both domestic and commercial applications.

The GridPro® range will complement your existing Click® installation, as the range was specifically designed to seamlessly match our existing ranges of Click® wiring accessories.

Ergonomic modules

GridPro® features design elements that enable quicker and easier installation whilst maintaining all the key features and stylish design of the existing range of Click® wiring accessories.

All modules come with backed off captivated terminal screws for ease of assembly.

A screwdriver guide ensures the screwdriver easily locates with terminal screw head to clamp the cable in position. The terminal screw apertures are designed to help guide the tool.





SCREW-IN
MODULES

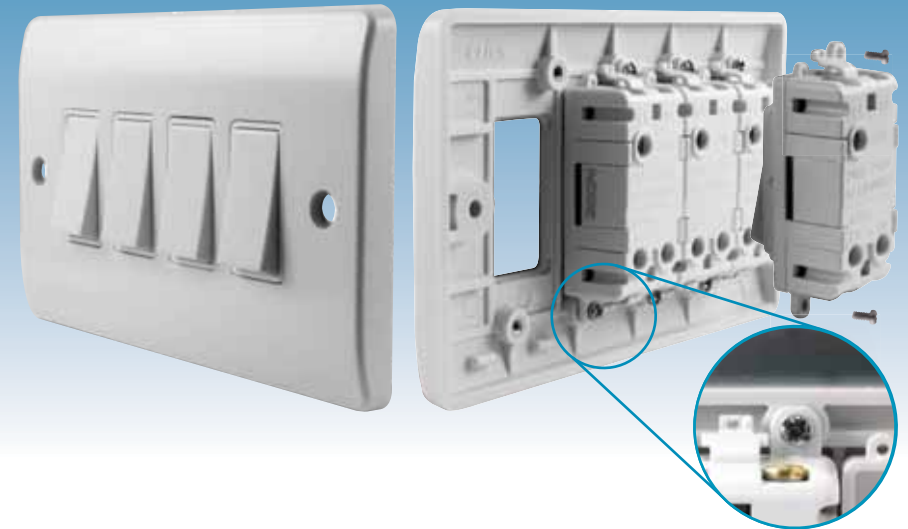
NO YOKE

Horizontal fixing screws

GridPro® frontplates have horizontal mounted screws to give a uniform, aesthetic look throughout the range.

No Yoke!

... for 1 - 4 Gang GridPro® frontplates



No Yoke!

The GridPro® modules are secured to the back of the 1 - 4 Gang GridPro® frontplates via the screw feature on the modules*. The benefit of not using a yoke is that it allows the installer to use standard back boxes!

*excluding the screwless Definity™ GridPro® frontplates, which have their own dedicated inserts.

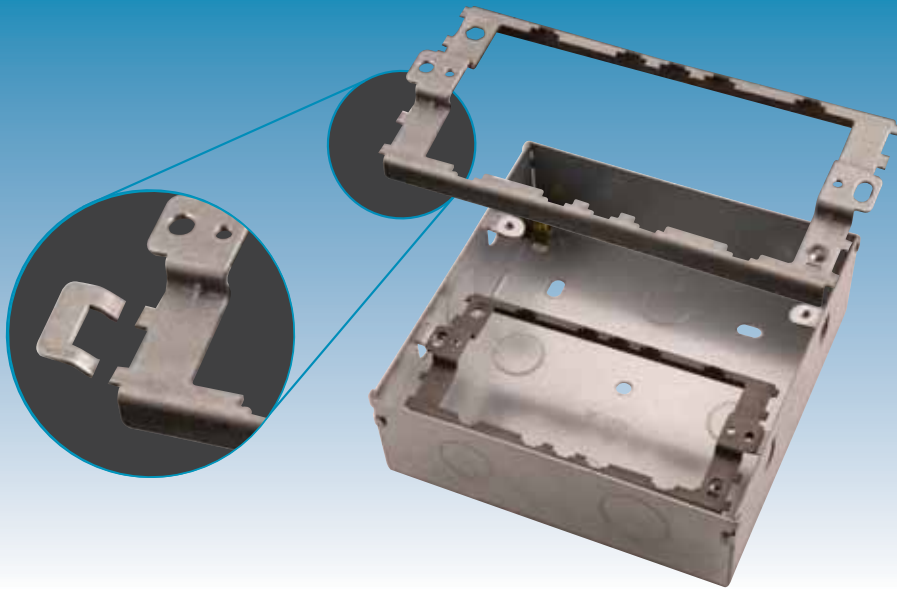
Screw directly on to the back of 1-4 Gang GridPro® frontplates!

Standard BS4662 back boxes

A unique feature of 1 - 4 Gang GridPro® frontplates is that any British Standard BS4662 flush mounted back boxes can be used. This is because our 1 - 4 Gang GridPro® frontplates do not require a yoke!*

*excluding the screwless Definity™ GridPro® frontplates, which have their own dedicated inserts.





Universal yokes

The GridPro® modules are secured to the back of the 1 - 4 Gang GridPro® frontplates via the screw feature on the modules*. The benefit of not using a yoke is that it allows the installer to use standard back boxes!

*excluding the screwless Definity™ GridPro® frontplates, which have their own dedicated inserts.



Now offering in house laser etching on our GridPro® modules!

Laser etching

Let us save you time and money and do the module etching for you! Completely customisable modules, offering you and your customers a wider variety of options.

Contact us for more information.



Clip-on modules

When a yoke is required on the multi-tier GridPro® frontplates the module can be assembled using the clip attachment, which secures them to the metal yokes.

For use with 6 - 24 Gang GridPro® frontplates*

*excluding the screwless Definity™ GridPro® frontplates, which have their own dedicated inserts.



All GridPro® modules are available in eleven distinctive, quality finishes, with black or white inserts, excluding antique brass and black nickel finishes, which are available with black inserts only.

Module finishes available: Antique Brass (AB), Black Nickel (BN), Pearl Nickel (PN), Polished Brass (BR), Polished Chrome (CH), Satin Brass (SB), Satin Chrome (SC), Brushed Stainless (BS), Stainless Steel (SS), Black (BK) and Polar™ White (PW).

Available
in 98 plate
designs...

with black or
white inserts.



Keeping US Boosted

1 AND 2 GANG SWITCHED SOCKETS WITH USB

Eliminate the need for bulky chargers and free up your plug sockets with 1 and 2 Gang switched socket with integrated USB! The convenient USB port is centrally located to avoid cable interference from anything that may be plugged into the sockets. Our 1 and 2 Gang switched sockets with single USB outlet are available in 98 plate designs and finishes within the Click® brands. This provides flexibility for use in various locations i.e. lounges, kitchens, bedrooms and offices.

Our retrofit sockets have a depth of just 20mm and can be comfortably mounted into a 25mm back box. 1 Gang version requires 35mm with 47mm in Define® and Definity™



USB output 5 volt 2 amps

Suitable for most tablets, smart phones, cameras and other USB devices, all of which can still be used whilst charging! Our single USB output guarantees optimum charge rate regardless of the device charging.

Safety

Tested and complies with UK safety and EMC requirements and is in-line with EU legislation. The USB socket ranges also benefit from short circuit protection, so should there be a short on the output the power supply will shut down and reset after the short circuit has been removed.

Twin earth terminals

For a simple connection of the earth conductor.





CMA812

CMA735

Easy installation...

with earth terminals at the top of the product.



Mode[®] made Easy

A STYLISH, CONTEMPORARY AND FLEXIBLE RANGE OF SMOOTH PROFILE WIRING ACCESSORIES

The smooth, modern lines of the Mode[®] accessory plate will fit easily into traditional and contemporary designs alike. Mode[®] accessories provide flexibility with a comprehensive selection of products ranging from a standard light switch and socket outlet through to more specialised products dealing with the very latest developments in entertainment media interfaces.

We've shown just a sample of the Mode[®] range. To see the full range or for more details, log onto www.scolmore.com and register for your free wiring accessories catalogue, or download the Mode[®] section.

Click[®] Mode accessories have been designed with the electrician in mind, by designing our products with earth terminals at the top of the product for easy installation.

Mode[®] accessories have been conceived and developed as a high quality, flexible and modern solution to virtually any domestic wiring requirement.

Interchangeable modules

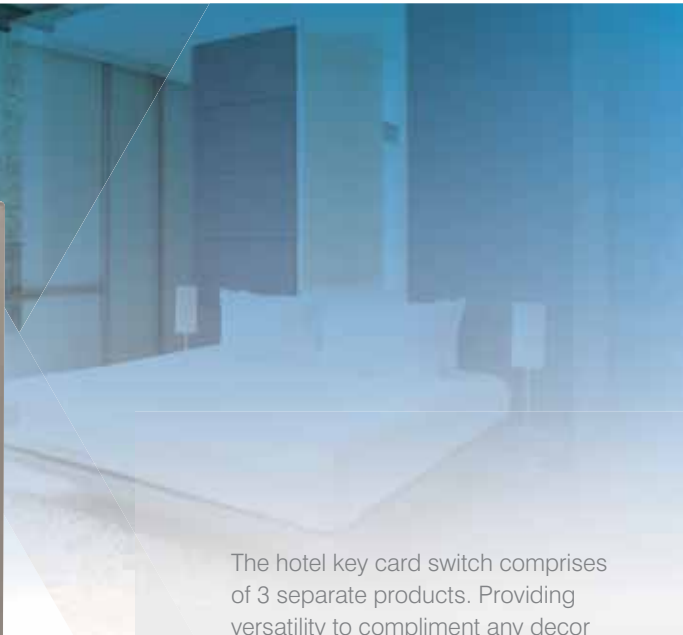
Simple, single screw fixing of modules offers the simplest possible means of installing and replacing modules.

The modular design of Mode[®] allows designers and installers unprecedented flexibility in creating dedicated wiring solutions to deal specifically with actual wiring needs.



Antimicrobial certified products

All white moulded and Mode[®] Part M wiring accessories are manufactured using Urea Formaldehyde, which has similar inherent properties to antimicrobial additives that inhibit the growth of infectious diseases. All products independently tested achieved a 99.99% kill off rate across all four types of the strains of bacteria - MRSA, E-Coli, Salmonella and Klebsiella Pneumoniae.



The hotel key card switch comprises of 3 separate products. Providing versatility to compliment any decor or existing Click® wiring installations, with interchangeable mounting and cover plates.

Switching to us is Key

HOTEL KEY CARD SWITCHES

Our key card switch acts as the main electrical switch for the room and is operated by the guests', reducing the amount of time the lights (and/or appliances) are left on. All lighting and heating facilities only become operational once a corresponding card is inserted into the key card switch, so no needless heating, cooling or lighting of an unoccupied space takes place. When the key card is removed the controlled circuits remain under power for a further 10 seconds to 5 minutes, which can be adjusted by the hidden potentiometer under the cover plate. This helps ensure a safe exit from the room before the power is turned off.

Compatible with hotels' entry system cards. Suitable for standard cards and credit cards 85.60mm x 53.98mm.

LED indicator

Locate the key card switch in the dark via the power LED indicator, so no additional lighting is required to turn the key card switch on.

Suitable for controlling lighting circuits

Suitable for switching inductive loads of 6AX and resistive loads of 10A. Larger loads such as sockets and air conditioning can be connected via contactors. Connection terminals suitable for 2 x 1.5mm² cable.

1. Mounting plate
2. Key card timer switch module
3. Finishes to complement all Click® decorative and white moulded ranges...





Simple
single screw
installation...
of the modules



CMA403

Overload Protection for Ventilation Equipment

It has been noted that some manufacturers of ventilation equipment (fans) are not installing internal fuses to protect the equipment. Instead the manufacturers are stating within their installation literature the fan requires overload protection via a 1, 3 or 5 amp fuse.

Regulation 134.1.1 of BS7671:2008 incorporating amendment No 1:2011 does require electrical equipment to be installed in accordance with the instructions provided by the manufacturers of the equipment.

As standard across our moulded and decorative ranges we offer a 10A 3 pole fan isolation switch and a fused connection unit module all in one switch plate. Saving you valuable time and money!

Simple, single screw installation of the modules on the plate allows contractors to devise and install customised switching solutions on site.



Module finishes available:
Antique Brass (AB), Black Nickel (BN), Pearl Nickel (PN), Polished Brass (BR), Polished Chrome (CH), Satin Brass (SB), Satin Chrome (SC), Brushed Stainless (BS), Stainless Steel (SS), Black (BK), Polar™ White (PW) and Click® White (WH).



Select your plate and modules...
then assemble



The Brightest Dimmer you can Fit

You'd expect bright ideas from Click®, simply because we talk to contractors. Your problems are our challenges. Our MiniGrid® dimmer module mounting kit fits all Click® MiniGrid plates, and its nut runner makes installation a breeze.

The dimmer module mounting kits comprise a module mount frame, operating knob and innovative nut runner to facilitate

the fixing of the locking nut. Locking nut and washer supplied with the Click® dimmer modules.

- Nut runner means it's easy to fit the locking nut and quick to install (supplied)
- Fits into the Click® wiring accessory ranges
- Wide range of wattages available (400W max)

Plate finishes available:

Antique Brass (AB)
Black Nickel (BN)
Brass (BR)
Chrome (CH)
Pearl Nickel (PN)

Satin Brass (SB)
Satin Chrome (SC)
Stainless Steel (SS)
Brushed Stainless (BS)

Also available:

Black (BK)
Polar™ White (PW)
Click® White (WH)

Interchangeable dimmer switch modules:

MD9010 1-10V analogue dimmer module (25 x 62 x 22mm)

MD9001 6A 2 way push on/off (non-dimmable) module (25 x 62 x 22mm)

MD9022 250W/Va 2 way resistive/ inductive dimmer module (25 x 62 x 22mm)

MD9042 400W/Va 2 way resistive/ inductive dimmer module (25 x 62 x 22mm)



MD150CH

Module mounting kit in polished chrome finish
Dimmer module not supplied.

We've shown just a sample of the MiniGrid® range. To see the full range or for more details, log onto www.scolmore.com and register for your free wiring accessories catalogue, or download the MiniGrid® section.



Tailor to
your needs...

with easy and quick
to install, simple screw
fixing modules.



Flexibility of Range comes as Standard

All of Click® plates are modular as standard, 750 modules in stock with millions of combinations.

Every installation's different – but they've got a lot in common - like the components of the mains wiring. MiniGrid® modules make it easy to configure and install accessories – saving you valuable time and money.

- The 12 and 18 Gang cover plates offer up to 18 different switching functions within a single plate
- 14 printed legends available as standard on double pole switches
- Over 175 unfurnished plates available
- Offers simplicity in its single screw fixing



MD023

MD004

MD029

Module finishes available: Antique Brass (AB), Black Nickel (BN), Pearl Nickel (PN), Polished Brass (BR), Polished Chrome (CH), Satin Brass (SB), Satin Chrome (SC), Brushed Stainless (BS), Stainless Steel (SS), Black (BK), Polar™ White (PW) and Click® White (WH).

Interchangeable modules:

MD023	20A double pole (twin width) switch modules
MD009	10AX 2 way 'paddle' switch module (triple width)
MD004	2 way 'ingot' switch modules
MD047	13A fused connection modules
MD029	13A resistive 10AX inductive double pole and key switch modules

We've shown just a sample of the MiniGrid® range. To see the full range or for more details, log onto www.scolmore.com and register for your free wiring accessories catalogue, or download the MiniGrid® section.

Antimicrobial
certified
products...

perfect for
commercial
applications



PRW618

CMA612



CL512

CL518

Mode's Extended Family

Latest additions to the comprehensive Mode® range of accessories are the 12 and 18 Gang plates. Utilising the plates and the MiniGrid® modules allows contractors to devise and install customised switching solutions on-site.

Antimicrobial certified products

All white moulded and Mode® Part M wiring accessories are manufactured using Urea Formaldehyde, which has similar inherent properties to antimicrobial additives that inhibit the growth of infectious diseases. All products independently tested achieved a 99.99% kill off rate across all four types of the strains of bacteria - MRSA, E-Coli, Salmonella and Klebsiella Pneumoniae.



MiniGrid® just got Tougher

The new 12 and 18 Gang Metal Clad switch plates offer versatility and strengthen the comprehensive selection of Metal Clad products that are already available. Electrophoretically coated plates and back boxes provide a durable and long lasting heavy duty finish to this attractive range of products.

All switch products are of modular construction allowing the installer total freedom in designing customised switching solutions according to on-site needs.

Also available:

1 and 2 Gang 13A DP Metal Clad switched socket with outboard neon rockers. Unfurnished plates and mounting boxes are available for use in conjunction with our extensive range of MiniGrid® and New Media™ modules...



CL835

CL840



SB1G

SB2G

No need to use your noggin!

Saves on time and cost.



How StudBox® works



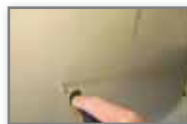
StudBox® 1 is 450mm long so no need to measure height from the floor on stud work.



Plasterer puts board in correct position then bangs in area of StudBox®.



Set StudBox® at marked height and insert first screw. Set level using spirit level then insert second screw.



Points on the face of the box mark exact position to cut out. No measuring required.



Push out tabs and insert cables into required box / boxes. Use snips to remove plaster board marking points off the boxes not used.



StudBox® fits tight to the back of board reducing noise and fire passage significantly. Working depth of 48mm.

OPTION 1



OPTION 2



OPTION 3



OPTION 4



OPTION 5



OPTION 6



Dimensions

SB6IN1 380mm - 450mm centres

SB1G 120mm - 600mm centres

SB2G 130mm - 600mm centres

ONE BOX, SIX OPTIONS AVAILABLE WITH SB6IN1



Complement your existing Click® wiring installation

Control at your Fingertips

WIRING ACCESSORIES FOR A SMARTER HOME

Scolmore's range of Click® Smart intelligent wiring accessories aims to strip home automation right back to basics, offering a smart solution that has at its core, accessibility and simplicity for the end user.

The Click® Smart system makes it easy to adapt and upgrade your home to provide extra security, energy saving, comfort and control.

Smart switches are compatible with Click® Smart and can be utilised with its switching and dimming receivers.

Smart switches consist of a retractive switch module and a switch cover plate, they are available in 5 switch types and multiple finishes and styles from our Click® wiring accessory ranges...

We have now put these components together as a simple smart code for your convenience.



RFDEL-71B
Dimming receiver

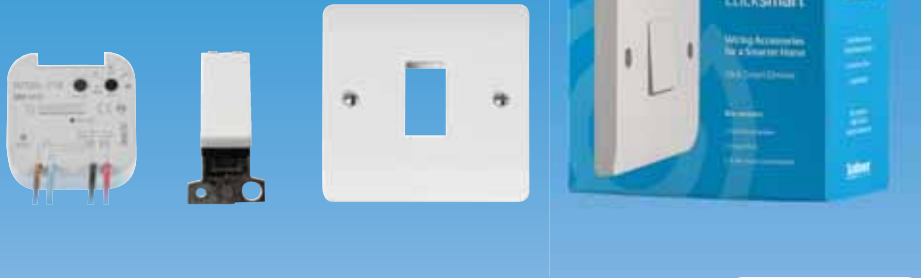


RFSAI-61B
Switching receiver

VP	CH	BK	-	SMART1
Plate Style	Product Finish	Insert Colour		Product Number

For more information visit www.scolmore.com and download the full range of Click® Smart switches and receivers.

Everything you need in one box - two smart solutions to make your home smarter

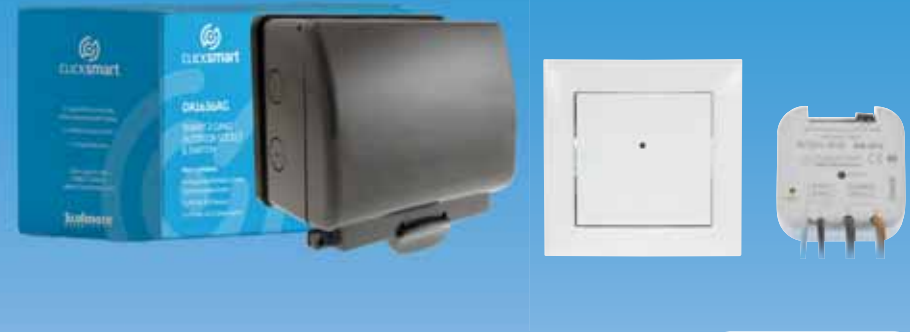


Solution one - Fix flickering rotary dimmers by using a retractive switch instead of a rotary dimmer (wired).

Code: CMA-SDIM1

What's in the box

- 1 x Dimming module
- 1 x Face plate
- 1 x Retractive switch module



Solution two - Add a wireless switch with an outdoor socket for multiple applications.

Code: OA1636AG

What's in the box

- 1 x Aquip66® 2 Gang switched socket outlet
- 1 x RFSAI-61B receiver
- 1 x RFWB-20/G smart switch



When you switch on one of your lights with a rotary dimmer do you experience continuous flickering?



Even when the lights on, the flickering has continued.



Dealing with constant flickering can be very frustrating for you.



Make your home smarter with the RFDEL-71B and a retractive switch.



Replace the wired rotary dimmer with the retractive switch and add the RFDEL-71B to the light fitting.



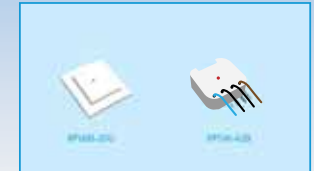
This will now stop any flickering that may have occurred.



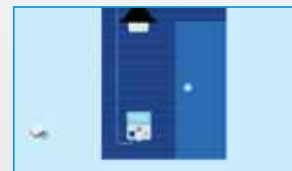
There's always something to do around the house, no matter what time it is.



It's sometimes difficult to see in the dark and you never know what you are walking into.



Make your home smarter with the Click® Smart RFWB-20G and RFSAI-61B.



Simply add the RFSAI-61B to the socket you wish to control.



And then add the RFWB-20/G switch to the convenient place.



By adding a smart switch you can now control anything plugged into the socket.

Create schedules
for timed automatic
control...

Three products are
all you need.

The Smart box, RF receivers and
a smart phone or tablet



CSB040

RFDEL-71B

RFSAI-61B

Smart box

The smart box itself, connected to the wireless router and a power socket outlet.

Receivers

Receivers are available in three categories - switching receivers, dimming receivers and shutter receivers.

Smart device

You can either use your mobile device or tablet to control Click® Smart around the house.



Download the app
from the **Apple App Store**
or **Google Play**

Smart Box

WIRELESS CONTROL VIA YOUR SMART PHONE OR TABLET

We have designed a bespoke Click® Smart app which puts the functionality of your home in the palm of your hand.

Designed with simplicity in mind the smart box can be utilised within new and existing Click® Smart installations, all that's required is a broadband connection. Simply plug the smart box into one of the ethernet ports, located usually on the back of your broadband router, download the app and away you go!

We've shown just a sample of the Click® Smart range. To see the full range or for more details, log onto www.clicksmart.com or subscribe to our Youtube page to watch the videos!



1 Smart box

All information is stored on the smart box.



40 Receivers

Each smart box can enable up to 40 receivers.



8 Devices

Up to 8 smart phones or tablets can control each receiver.



0 Controllers

No need to buy multiple controllers.

A single media plate offers one convenient point...
to combine power and media together.

The MP606 is perfect for your satellite installation



MP606CHWH



MM002BK



MM023WH



Required modules:

- MM406WH Double satellite - white
- MM501WH HDMI outlet with flexible connection (80mm long) - white
- MM415WH Single male IEC (FM) - white
- MM410WH Single female IEC (TV) - white
- MM460WH Telephone master - white

The Power of Media

NEW MEDIA™ PLATES AND MODULES

The modern home is now more than a mere home. It doubles up occasionally as a cinema, concert hall, meeting venue and computer room etc. and Click® New Media wiring accessories are perfect.

10AX/13A rocker switch modules

- MM002BK 10AX 2 way switch - black
- MM002WH 10AX 2 way switch - white
- MM025BK 10AX intermediate switch - black
- MM025WH 10AX intermediate switch - white

20A double pole rocker switch modules

- MM022BK 20A DP switch - black
- MM022WH 20A DP switch - white
- MM023BK 20A DP switch with neon - black
- MM023WH 20A DP switch with neon - white



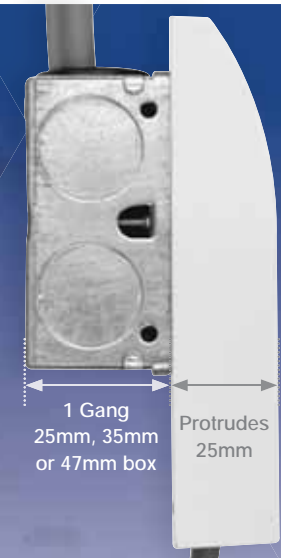
New Media™ modules:

- MM305WH VGA module with fly-lead - white
- MM300WH USB throughput with fly-lead - white
- MM496WH 3.5mm audio jack module with fly-lead - white
- MM491WH Triple RCA module with screw terminals - white
- MM550WH Brush module
- MM515 2A USB charging outlet
- MM501WH HDMI outlet with flexible connection (80mm long)



Can be utilised with
a 25mm deep back
box if required

UK Design Registration No. 3015175



Ease of Installation is Hard-Wired into our Thinking

Connecting up a 45A cable isn't easy so Scolmore® have come up with a solution – one wire per terminal. It'll save your fingertips – and save you time.

45A Max. dual connection plate and pattress box

Product references:
PRW217 and PRW218

- Each incoming and outgoing cable wired independently, making installation easier
- Accepts up to 3 x 16mm² twin and earth with 45A maximum loading
- Dedicated 35mm deep pattress box



PRW218
Pattress box
for PRW217

PRW217
45A Max. dual
connection plate

Antimicrobial certified products

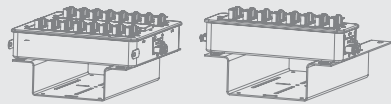
All white moulded and Polar™ wiring accessories are manufactured using Urea Formaldehyde.



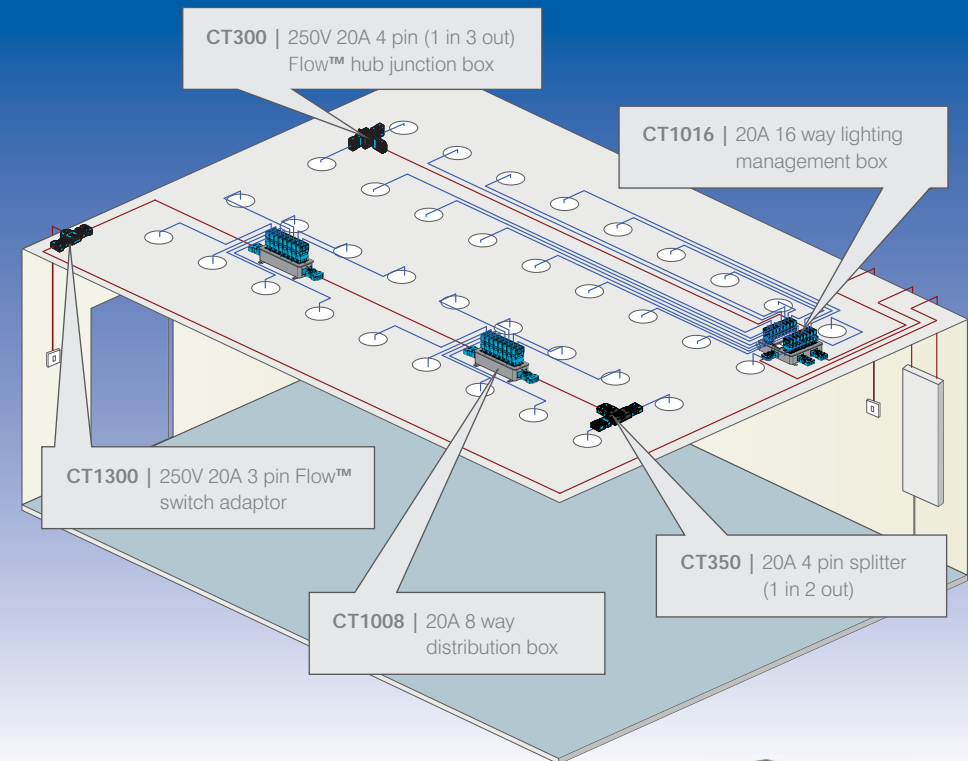
Connectors, Hubs & Management Boxes

The lighting management system is a new range of additional products to the existing Flow™ range and has been designed specifically to help contractors create more complex lighting installations quickly, easily and safely. It features a number of new products that allow the quick connection, configuration and re-configuration of circuits, primarily intended for lighting.

Key features of the lighting management boxes:



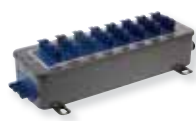
- Suitable for loads up to 20A which means it can be used for more than just lighting
- Management boxes can be controlled or dimmed using suitable PIR sensors or mains dimmers
- Can incorporate wireless switching and dimming scenarios using Click® Smart products
- Durable heavy duty finish to withstand all installation requirements
- Ample fixing points to suit any method of installation



CT1016

Use the CT1016 to take control of up to 16 lights (24 using the CT350), with three different switching configurations. Easily add a switched live into a Click® Flow circuit.

- 16 way configurable box
- 1 x 16 way (1 way switching)
- 1 x 16 way (2 way switching)
- 2 x 8 way (1 way switching)
- Additional 8 ways available using CT350 splitter
- Additional way allows interlinking



CT1008

With the CT1008 you can connect up to 8 lights (16 using the CT350), or you can connect another CT1008 to the output at the end.

- 8 way box
- Connect up to 8 lights (16 using the CT350)
- Additional output allows interlinking or provides additional way



CT1300

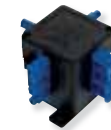
Plug-in switch adaptor easily adds a switched live into a Click® Flow circuit.

- Pre-wired with earth and neutral links
- 250V–20A plug-in connector
- Large terminals with easy access
- Terminal screws supplied raised
- Easy lock and release mechanism
- Versatile, easy-connection system



SP1016

Mounting bracket for cable suspension tray suitable for both CT1016 and CT1008 lighting management boxes.



CT300

4 pin (1 in, 3 out) Flow™ hub junction box. The hub can also be connected directly to another hub.



CT350

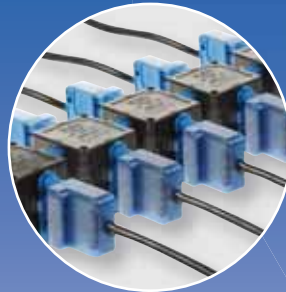
This splitter has been specifically designed to be slimline so that it can be used with the CT1016 and CT1008.

- Allows up to double the amount of ways
- Easy lock and release mechanism
- Versatile, easy-connection system

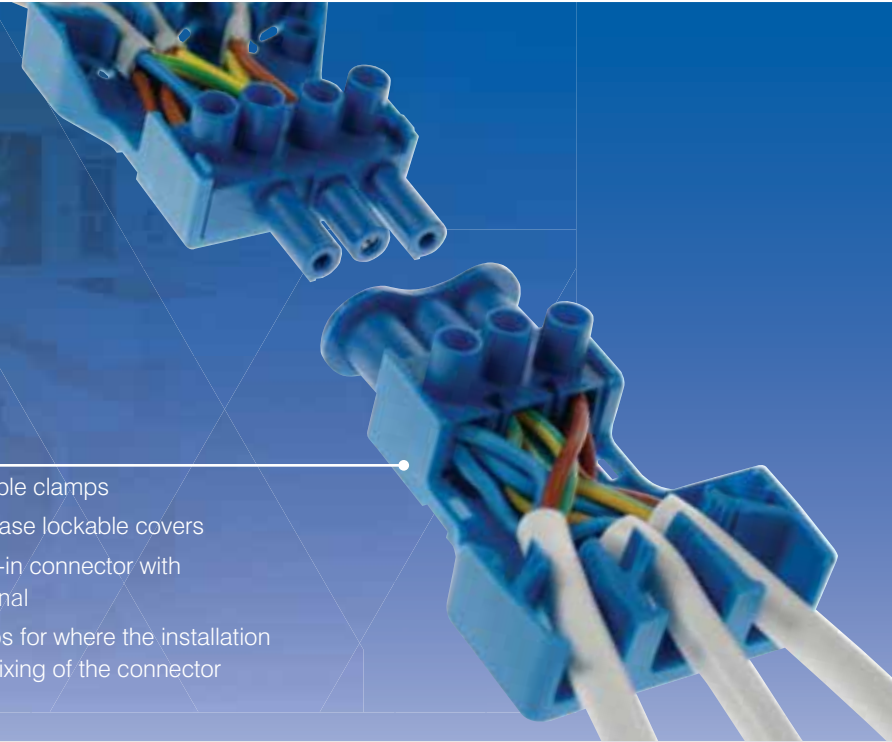


CT300

250V 20A 4 pin (1 in 3 out)
Flow™ hub junction box



Hubs can be linked together in a chain



CT103C

- Fast-fit cable clamps
- Quick release lockable covers
- 3 pin plug-in connector with loop terminal
- Cable grips for where the installation limits the fixing of the connector

The Hub

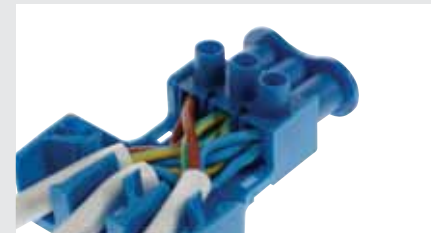
Designed to take the 3 pin or 4 pin plug-in connector versions, giving contractors the flexibility to arrange circuits easily and quickly.

- One hub can be connected directly to another or via the Flow™ link cables
- A quick and easy solution when adding lighting or appliances to an existing Flow™ circuit (can be linked up to 20A)



CT203C

- Quick release lockable covers
- 4 pin plug-in connector with auxiliary terminals
- Fast-fit cable clamps
- Auxiliary provides the opportunity for a second switched live or permanent feed for use typically with emergency lighting applications



CT103M

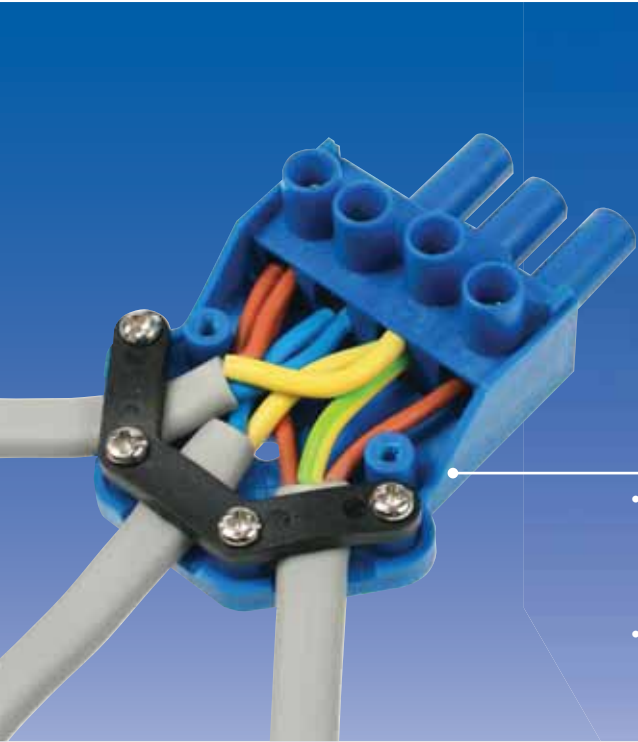
- Fast-fit cable clamps
- Quick release lockable covers
- Single male connector



CT203M

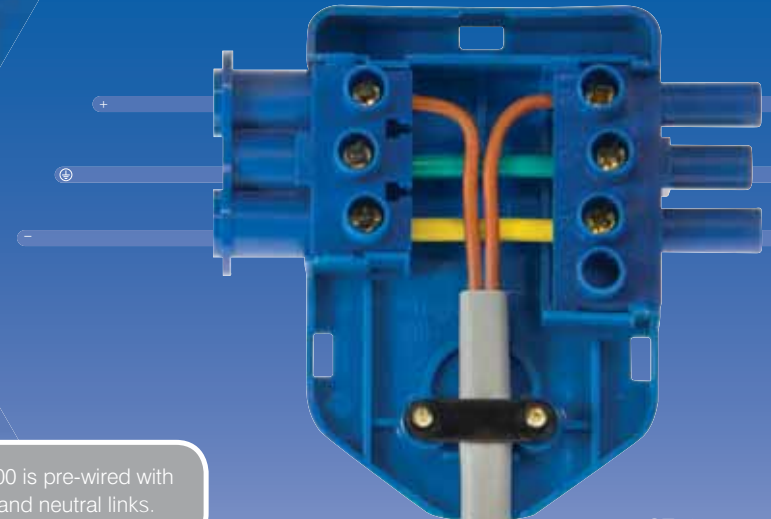
- Quick release lockable covers
- Fast-fit cable clamps
- Single male connector

We've shown just a sample of the Flow™ option. To see the full range or for more details, log onto www.scolmore.com to download our Flow™ catalogue and to view the complete range of wiring accessories.



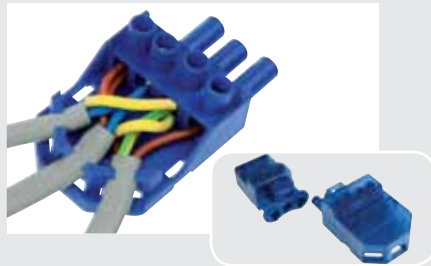
CT102C

- 3 pin plug-in connector with loop terminal. Cable grips for where the installation limits the fixing of the connector
- Cord restraint is fitted within the male connector



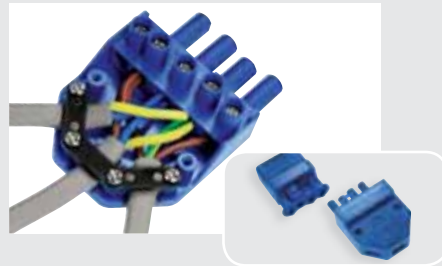
CT1300 is pre-wired with earth and neutral links.

CT1300



CT101C

- Increased load handling with 20A rating
- Male: Max 1.5mm² 3 core cable; Female: Max 3 x 2.5mm² twin and earth (with additional loop terminal)
- Also available on a range of FlameGuard® downlights
- Replaces the CT100C



CT202C

- 4 pin plug-in connector with auxiliary terminals
- Auxiliary provides the opportunity for a second switched live or permanent feed for use typically with emergency lighting applications

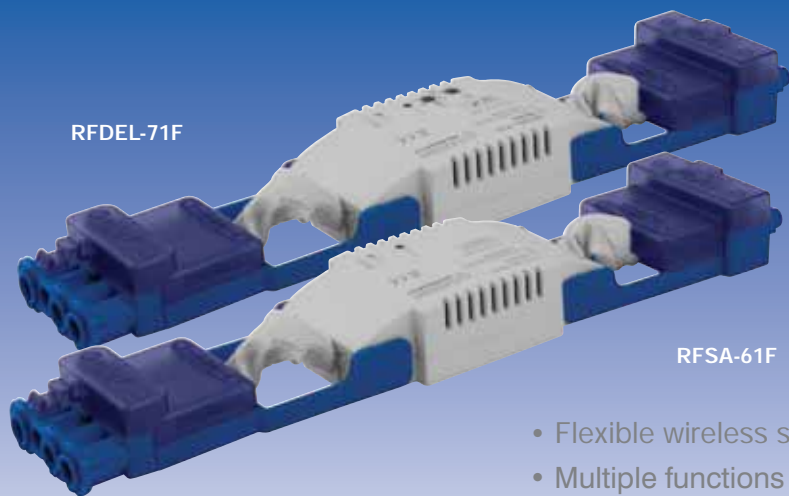
Switch Adaptor

We recognise that your time is money, our plug-in switch adaptor easily adds a switched live into a Click® Flow circuit. With easy access large terminals and fast connection.

CT1300

- 250V~ 20A plug-in connector
- Large terminals with easy access
- Terminal screws supplied raised
- Easy lock and release mechanism
- Versatile, easy-connection system





RFDEL-71F

RFSA-61F

- Flexible wireless switching
- Multiple functions
- Control wirelessly



CT1401



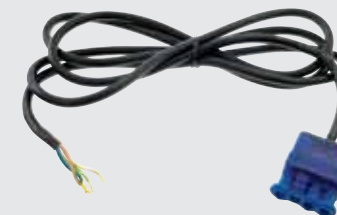
CT1400

CT1401

- Click® Flow ceiling rose cover
(Not suitable for use with CT103 / CT203)

CT1400

- 4 pin plug-in ceiling rose connector with auxiliary terminals
- Auxiliary provides the opportunity for a second switched live or permanent feed for use typically with emergency lighting applications



Low smoke zero halogen pre-wired cables

CT732	6A 3 pole 0.75mm ² to free end 2m
CT733	6A 3 pole 0.75mm ² to free end 3m
CT735	6A 3 pole 0.75mm ² to free end 5m
CT742	6A 4 pole 0.75mm ² to free end 2m
CT743	6A 4 pole 0.75mm ² to free end 3m
CT745	6A 4 pole 0.75mm ² to free end 5m
CT845	20A 4 pole 2.5mm ² male to female 5m



Pre-wired cables

CT802	6A 4 pin Flow™ extension cable 2 metre cable
CT803	6A 4 pin Flow™ extension cable 3 metre cable
CT805	6A 4 pin Flow™ extension cable 5 metre cable

Smart Wiring Accessories

Upgrade your electrical installation with our new Click® Smart receivers pre-fitted with Flow™ connectors.

Switching and dimming receivers

RFSA-61F	16A 1 channel multifunction switching receiver pre-wired with Flow™ connector
RFDEL-71F	160Va 1 channel multifunction dimming receiver pre-wired with Flow™ connector

Smart LED dimming

Dimming and controlling dimmable 230V LED light sources can be so confusing for contractors and end users but with the RFDEL-71B this is made easy.

- Suitable for dimming a single 5W dimmable LED source
- 7 programming options
- Select between capacitive, LED, resistive and inductive loads



Includes
Flow™ plug-in
connector...
Easy lock and
release mechanism

FlameGuard® & Flow™

We recognise that your time is money, our plug-in connector gives you easy access with large terminals and fast connection. Designed initially for lighting circuits to enable isolation of transformers, control gear etc. whilst conducting the 1000V insulation resistance test.

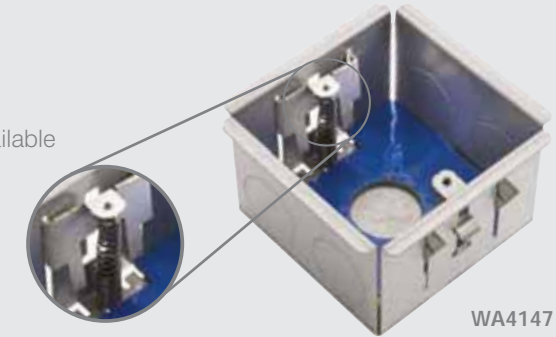
The FlameGuard® system has already been incorporated into a selection of our ranges of low voltage and mains downlights. There is a FlameGuard® protected, fire and acoustic rated downlight to fit virtually every installation requirement. Other related products include optional moisture seals to prevent the ingress of moisture laden air into ceiling voids or attic spaces etc. A specially developed insulation support box which facilitates the laying of an unbroken layer of insulation material directly over any FlameGuard® downlight installation.

FlameGuard® Back Boxes

PEACE OF MIND IN THE EVENT OF FIRE

- No additional components to purchase or install
- Simple and quick to install saving time and money
- Multiple cable entry points available
- Earth terminal fitted
- Durable all steel construction

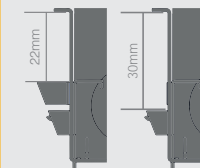
Unique spring loaded lugs



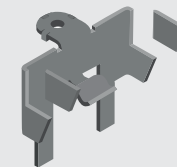
WA4147

NEW and improved features*

*WA4247 and WA4147 only



Upper tabs work from 5mm to 22mm
With the upper tabs removed, the lower tabs work from 15mm to 30mm



Now with second pair of gripping arms
Maximum board thickness of 30mm
Arms are designed to easily break off with pliers



WA4247



WA4237



WA4135

FlameGuard® back boxes have been tested and conform to both fire and acoustic standards BS EN 1364-1: 2015, Acoustic BS EN ISO 140-3:1995. Complies with Building Regulations. Fire tested up to 90 minutes with the capability of the boxes being mounted back to back.

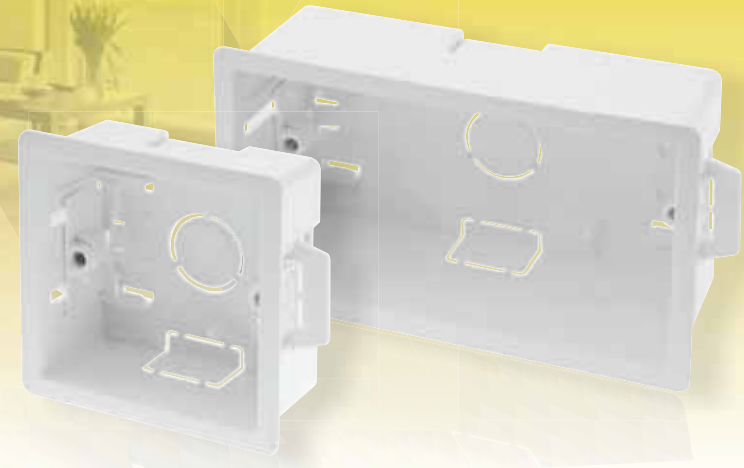


deco[®]

Working Side by Side

The 1 + 2 dual accessory galvanised steel back boxes (WA370 and WA375) have been designed to allow all Deco[®] products to be fitted side by side with the supplied gaskets. This provides the neatest installation of Deco[®] accessories possible.

Our Deco[®] range is available in 9 distinctive quality finishes: antique brass, polished brass, polished chrome, satin chrome, satin brass, black nickel, pearl nickel, stainless steel and georgian style cast brass.



Click Together with the Click[®] Connector

Ezylink (GA100) dry lining wall box connector simply connects most combinations* of Click[®] dry lining boxes to provide the neatest installation of cavity boxes possible.

*Ezylink not suitable for use with WA108P





The updated site now incorporates a number of improved features that allow users to access new information directly and easily:

- Ordering 24 hours a day 7 days a week with the ability to check current stock levels as required, meaning you are not restricted to ordering during normal office hours
- Access to on-line catalogues will keep you fully updated with the complete product range and provide information on new products as and when they become available

- The order tracking service keeps you up to date with the progress of your shipment
- Managing your administration paper work is now even easier with instant access to reports and essential documents at a click of a button
- A 'quick buy tab' and the ability to store the most common orders for repeated use, adds to the versatility and flexibility of the revised system.

To register: E-mail us at sales@scolmore.com or call our Sales Office on 01827 63454

Are you a Click® stockist?

If so, you automatically have access to the Marketing Hub. Download all our latest literature, flyers to personalise and our full range of images for use on your website or artwork. Follow the links from www.scolmore.com for more information.

So, why not click and find out how we can help you?



Visit www.scolmore.com to see our new website, packed with new features and easier navigation.





Subscribe to our YouTube channel for our latest product and installation videos! Just search 'Click Scolmore'.

You can also find us on:



<https://www.facebook.com/ClickScolmore/>



<https://twitter.com/ClickScolmore>



<https://www.linkedin.com/company/scolmore-international-limited/>

Download the free app today from the app store by searching 'scolmore'.

The new app from Click® Scolmore allows you to use your phone to browse our complete range of products, add products to your favourites or to the quote basket. The app then allows you to email the contents of the basket back to yourself providing all the information you need to obtain any quotations.

Features include:

- Downloadable catalogues
- Scolmore news
- Electricians tool kit
 - Zs calculator
 - Cable selection and volt drop calculator
 - KVA converter
 - Cost saving calculator
 - Downlight no. calculator
 - Resistance calculator
 - Voltage calculator
 - Current calculator
 - Power calculator
- Quote basket
- Product videos



United Kingdom

Scolmore[®]
G R O U P

Scolmore Park, Landsberg,
Lichfield Road Industrial Estate,
Tamworth, Staffordshire
B79 7XB United Kingdom

T: +44 (0)1827 63454
F: +44 (0)1827 63362
E: sales@scolmore.com

www.scolmore.com

Southern Ireland

click[®] Litehouse

18 Corrig Road,
Sandyford Industrial Estate,
Dublin,
D18 WV79 Ireland

T: +353 (1) 2811 122
F: +353 (1) 2811 224
E: sales@clicklighthouse.ie

www.clicklighthouse.ie

MAR7801/5