



Stylish Electrical
Essentials





Antimicrobial Certified Products

All white moulded and Mode® Part M™ wiring accessories are manufactured using Urea Formaldehyde, which has similar inherent properties to antimicrobial additives that inhibit the growth of infectious diseases. All products independently tested achieved a 99.99% kill off rate across all four types of the strains of bacteria - MRSA, E-Coli, Salmonella and Klebsiella Pneumoniae.

curva®

The Modern Domestic Wiring Solution

Contents

Switches	15	Moulded white accessories are often described as utilitarian, ie. useful or practical without being attractive.
Socket Outlets	18	
13A Fused Connection Units	19	This is certainly not the case with the Curva® range of smooth profile accessories.
Control Switches	110	
Shaver Socket & Blank Plates	112	In creating the modern, aesthetically pleasing and ergonomic design of the Curva® range we did not lose sight of the need to produce a true value for money product offering the utmost appeal to installers and end users alike.
Telephone & Data Sockets	114	
TV & Satellite	115	
Patress Boxes	116	
Dry Lining Boxes	117	Only the best quality raw materials were used in producing this durable, attractive and modern range of accessories which will adorn the walls of all manner of buildings for years to come.

10 YEAR No Quibble Guarantee

All Click® Curva® accessories are covered by our straight forward 'No Quibble Guarantee' against any fault in materials or manufacture experienced at any time within 10 years of the date of supply.



Switches

10AX Plate Switches | Dimmer Switches

The range of Curva® switches described in the following pages has been developed to offer a solution for almost every possible design need and will enhance the décor of any area whether in a kitchen, bedroom, lounge or study etc...



CCA010/CCA011/CCA025



CCA012



CCA013



CCA027



CCA019



CCA105

Plates Switches

- CCA010 10AX 1 Gang 1 Way Plate Switch
- CCA011 10AX 1 Gang 2 Way Plate Switch
- CCA012 10AX 2 Gang 2 Way Plate Switch
- CCA013 10AX 3 Gang 2 Way Plate Switch
- CCA019 10AX 4 Gang 2 Way Plate Switch
- CCA025 10AX 1 Gang Intermediate Plate Switch
- CCA027 10AX 1 Gang 1 Way Retractive 'Bell' Switch
- CCA105 10AX 6 Gang 2 Way Plate Switch

Standards: BS EN 60669

Back Box Depth: 16mm Minimum **Cable Size:** 4 x 1.5mm² / 2 x 2.5mm² / 1 x 6mm² Maximum

Dimensions: 1 Gang: (86mm x 86mm x 9.5mm), 2 Gang: (146mm x 86mm x 9.5mm)



CCA141



CCA142



SP900



MD9014



CCA143



CCA144

Switch modules interchangeable with MiniGrid® modules. We recommend the use of branded halogen lamps with all Curva® dimmers. The use of inferior, non-branded lamps may require the nominal rating of the dimmer to be reduced. These dimmer switches have not been designed for use with LED lamps. However, they may be suitable for some good quality LED lamps. For further information please contact the Click® technical support team.



Dimmer Switches

- CCA141 1 Gang 2 Way 250Va Dimmer Switch
- CCA142 2 Gang 2 Way 250Va Dimmer Switch
- CCA143 3 Gang 2 Way 250Va Dimmer Switch
- CCA144 4 Gang 2 Way 250Va Dimmer Switch

Dimmer Modules

- MD9010 1-10V Analogue Dimmer Module (25 x 62mm)
- MD9001 6A 2 Way Push On/Off (Non-Dimming) Module (25 x 62mm)
- MD9022 250W 2 Way Dimmer Module (25 x 62mm)
- MD9042 400W 2 Way Dimmer Module (25 x 62mm)
- MD9014 100W Dual Mode Dimmer Module with Trim (26.5 x 55mm)
- SP900 Dimmer M10 Nut Runner Tool
Use the nut runner to easily exchange dimmer modules and create customised dimmer switch plate.

Standards: BS EN 60669-1, BS EN 55015 **Type:** Leading Edge, **MD9014:** Leading & Trailing Edge
Back Box Depth: 25mm Minimum **Cable Size:** 2 x 1.5mm²
Dimensions: **1 Gang:** (86mm x 86mm x 9.5mm), **2 Gang:** (146mm x 86mm x 9.5mm)

Power Socket Outlets, Fused Connection Units & Control Switches

All Curva® 13A sockets and fused connection units are tested and approved to BS1363 offering assured quality and safety. The provision of a large earth terminal on sockets and fused connection units as standard, greatly facilitates wiring and installation.

The Curva® range offers a solution for almost every possible design need and will enhance the décor of any area whether in a kitchen, bedroom, lounge or study etc...

13A Wall Socket Outlets | Round Pin
Wall Socket Outlets | Fused Connection Units
Fan Isolation Switches | DP Switches





CCA038



CCA039



CCA605



CCA606



CCA771



CCA780

Switched Socket Outlets

- CCA605 13A 1 Gang Switched Socket
- CCA606 13A 2 Gang Switched Socket

Round Pin Socket Outlets

- CCA038 5A Round Pin Socket
- CCA039 2A Round Pin Socket

Switched Socket Outlets With USB

- CCA771 13A 1 Gang Switched Socket With 2.1A USB Outlet
- CCA780 13A 2 Gang Switched Socket With 2 X USB Outlets (Total Output 2.1A)

Standards: BS 1363, BS 546 **CCA780:** BS 5733, BS1363, BS EN 60950-1, EN 61000-6-1/3, EN 61204-3
Back Box Depth: 25mm Minimum **771:** 35mm **Cable Size:** 4 x 2.5mm² / 2 x 4mm²
Dimensions: **1 Gang:** (86mm x 86mm x 9.5mm), **2 Gang:** (146mm x 86mm x 9.5mm)



CCA050



CCA051



CCA052



CCA053

Fused Connection Units With Optional Flex Outlet Through Front

- CCA050 13A Fused Connection Unit
- CCA051 13A DP Switched Fused Connection Unit
- CCA052 13A DP Switched Fused Connection Unit With Neon
- CCA053 13A Fused Connection Unit With Neon

Standards: BS 1363 and BS 1362 (fuse)
Back Box Depth: 25mm Minimum **Cable Size:** 4 x 2.5mm² / 2 x 4mm²
Dimensions: **1 Gang:** (86mm x 86mm x 9.5mm)



CCA020



CCA021



CCA022



CCA023



CCA024



CCA040



CCA042



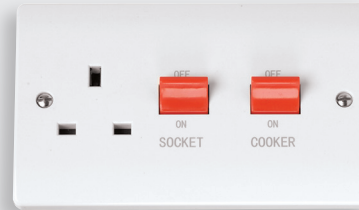
CCA200



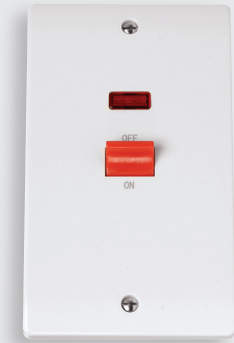
CCA201



CCA202



CCA204



CCA203



CCA205

20A Control Switches With Optional Flex Outlet

- CCA040 20A DP 'Water Heater' Switch
- CCA022 20A DP Switch
- CCA023 20A DP Switch With Neon
- CCA042 20A DP 'Water Heater' Switch With Neon

20A DP Sink/Bath Switch

- CCA024 20A DP Sink/Bath Switch With Neon

Fan Isolation Switch

- CCA020 10A 3 Pole Fan Isolation Switch
- CCA021 10A 3 Pole Isolation Switch

45A Switches And Socket Outlets

- CCA200 45A 1 Gang DP Switch
- CCA201 45A 1 Gang DP Switch With Neon
- CCA202 45A 2 Gang DP Switch
- CCA203 45A 2 Gang DP Switch With Neon
- CCA204 45A 2 Gang DP Switch With 13A DP Switched Socket
- CCA205 45A 2 Gang DP Switch With 13A DP Switched Socket & Neons

Standards: 022, 023, 024, 040, 042: BS EN 60669-1 020: IEC / EN 60669-2-4 **Back Box Depth:** 25mm Minimum
Cable Size: 20A DP: 4 x 2.5mm² 10A 3P: 1 x 2.5mm² / 2 x 2.5mm²
Dimensions: 1 Gang: (86mm x 86mm x 9.5mm)

Standards: 200, 201, 202, 203: BS EN 60669-1 203, 204: BS 4177-1-2-3 and BS 1363-2
Back Box Depth: 35mm Minimum **Cable Size:** 45A: 1 x 16mm²
Dimensions: 1 Gang: (86mm x 86mm x 9.5mm), 2 Gang: (146mm x 86mm x 9.5mm)



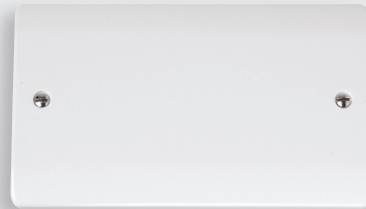
CCA017



CCA100



CCA060



CCA061

Blank Plates

- CCA060 1 Gang Blank Plate
- CCA061 2 Gang Blank Plate

Flex Outlet Plates

- CCA017 20A Flex Outlet Plate

Dual Voltage Shaver Socket

- CCA100 115/230V Dual Voltage Shaver Socket

CLICK® dual voltage shaver outlets incorporate a double wound isolating transformer rated 20Va at 230V or 115V and meets BS EN 61558-2-5: 1998 making it safe for use in bathrooms.

Shaver outlet is not continuously rated and therefore not suitable for use as a permanent charging outlet.

Standards: 100: BS EN 61558

Back Box Depth: 017: 16mm min. 100: 47mm min. **Cable Size:** 100: 2 x 1.5mm² / 1 x 2.5mm² 017: 1 x 6mm² / 4 x 2.5mm²

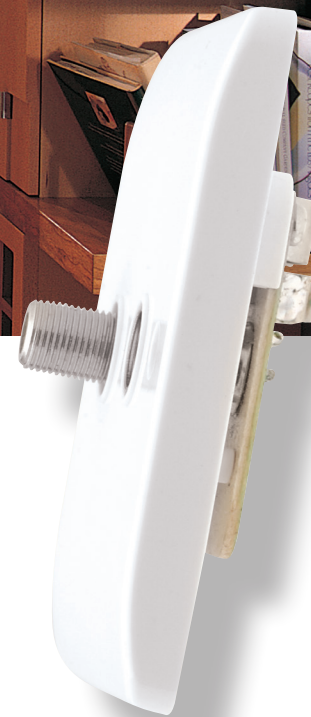
Dimensions: 1 Gang: (86mm x 86mm x 9.5mm), 2 Gang: (146mm x 86mm x 9.5mm)

TV, Telephone & Data Sockets

Providing the means to facilitate the connection of modern communications equipment is as important today as it is to provide the electrical power to operate them.



RJ11 Outlet | UK Telephone Outlets |
Satellite Socket Outlets | Coaxial Sockets





CCA115

CCA122/127

CCA119/124



CCA065

CCA066

CCA156



CCA170



CCA157



CCA158



CCA159

RJ11 Data Outlet

CCA115 Single RJ11 (Irish/US) Outlet

Telephone Outlets

- CCA119** Single Telephone Outlet - Master
- CCA122** Twin Telephone Outlet - Master
- CCA124** Single Telephone Outlet - Secondary
- CCA127** Twin Telephone Outlet - Secondary

Twin outlets are 2 separate sockets and not internally linked together.

Back Box Depth: 16mm Minimum **Termination Type:** IDC
Dimensions: 1 Gang: (86mm x 86mm x 9.5mm)

Non-Isolated Coaxial Outlets (Unshielded)

- CCA065** Single Coaxial Outlet
- CCA066** Twin Coaxial Outlet

Satellite Outlets (Unshielded)

- CCA156** Non-Isolated Single Satellite Outlet
- CCA157** Isolated Satellite & Isolated Coaxial Outlet
- CCA170** Non-Isolated Satellite & Non-Isolated Coaxial Outlet

Isolated Coaxial Outlets (Unshielded)

- CCA158** Single Isolated Coaxial Outlet
- CCA159** Twin Isolated Coaxial Outlet

Isolated outlets will filter out any interference, if a 2 way signal is required, i.e. for use with satellite hard wire extensions, then a non-isolated outlet is required.

Back Box Depth: 16mm Minimum
Dimensions: 1 Gang: (86mm x 86mm x 9.5mm)



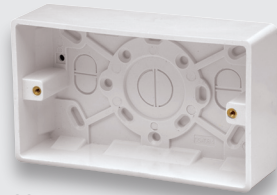
CCA080

CCA081

CCA082



CCA083



CCA084



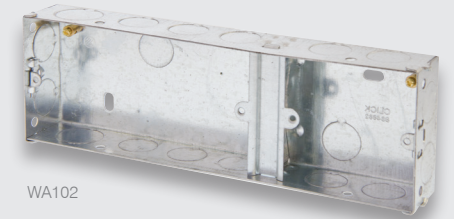
CCA085



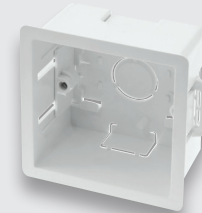
CCA086



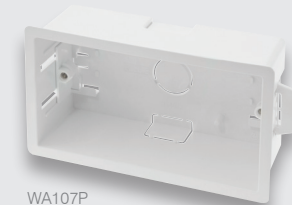
WA095



WA102



WA106P



WA107P



GA100



WA4247

essentials™ For the complete range of back boxes see Essentials™ page m4.
For the complete range of FlameGuard® back boxes see Essentials™ page m8.

Moulded Pattress Boxes

- CCA080 1 Gang 16mm Deep Pattress Box With Earth Terminal
- CCA081 1 Gang 25mm Deep Pattress Box
- CCA082 2 Gang 25mm Deep Pattress Box
- CCA083 1 Gang 35mm Deep Pattress Box
- CCA084 2 Gang 35mm Deep Pattress Box
- CCA085 1 Gang 47mm Deep Pattress Box With Earth Terminal
- CCA086 2 Gang 47mm Deep Pattress Box Fitted With Cable Restraint & Earth Terminal

Galvanised Steel Back Boxes

- WA092 1 Gang 16mm Deep Galvanised Steel K.O. Box
- WA093 1 Gang 25mm Deep Galvanised Steel K.O. Box
- WA094 2 Gang 25mm Deep Galvanised Steel K.O. Box
- WA095 1 Gang 35mm Deep Galvanised Steel K.O. Box
- WA096 2 Gang 35mm Deep Galvanised Steel K.O. Box
- WA097 1 Gang 47mm Deep Galvanised Steel K.O. Box
- WA098 2 Gang 47mm Deep Galvanised Steel K.O. Box
- WA099 1 + 1 35mm Deep Dual Accessory Box
- WA102 1 + 2 35mm Deep Dual Accessory Box

'Ezylink' Dry Lining Box Connector

- GA100 'Ezylink' Dry Lining Box Connector

Dry Lining Boxes

- WA087P 1 Gang 35mm Deep Dry Lining Box
- WA088P 2 Gang 35mm Deep Dry Lining Box
- WA106P 1 Gang 47mm Deep Dry Lining Box
- WA107P 2 Gang 47mm Deep Dry Lining Box
- WA108P Round Ceiling 34mm Deep Dry Lining Box

FlameGuard® Dry Lining Boxes

- WA4135 1 Gang 35mm Deep FlameGuard® Dry Lining Box
- WA4235 2 Gang 35mm Deep FlameGuard® Dry Lining Box
- WA4147 1 Gang 47mm Deep FlameGuard® Dry Lining Box
- WA4247 2 Gang 47mm Deep FlameGuard® Dry Lining Box

A series of 18 horizontal grey bars stacked vertically, providing a space for writing notes. Each bar is approximately 734 pixels wide and 25 pixels high, with a small gap between each bar.